

第58回東日本ボウリング選手権大会



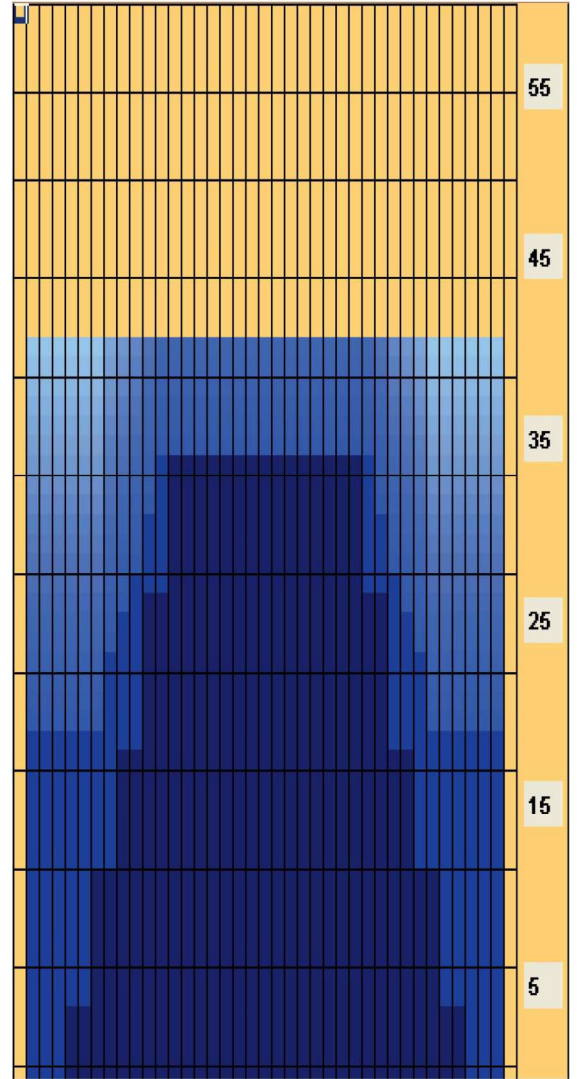
Oil Pattern Distance: 42 Feet **Reverse Brush Drop:** 42 Feet **Oil Per Board:** 50 uL
Forward Oil Total: 28.25 mL **Reverse Oil Total:** 12.05 mL **Volume Oil Total:** 40.3 mL
Forward Boards Crossed: 565 Boards **Reverse Boards Crossed:** 241 Boards **Total Boards Crossed:** 806 Boards

	Start	Stop	Loads	Speed	Crossed	Start	End	Feet	T.Oil
1	5L	5R	7	10	217	0.0	8.5	8.5	10850
2	7L	7R	5	10	135	8.5	15.5	7.0	6750
3	9L	9R	4	10	92	15.5	21.1	5.6	4600
4	11L	11R	4	14	76	21.1	29.0	7.9	3800
5	13L	13R	3	18	45	29.0	36.6	7.6	2250
6	2L	2R	0	18	0	36.6	42.0	5.4	0

	Start	Stop	Loads	Speed	Crossed	Start	End	Feet	T.Oil
1	2L	2R	0	22	0	42.0	36.0	-6.0	0
2	12L	12R	1	22	17	36.0	32.9	-3.1	850
3	11L	11R	1	18	19	32.9	30.4	-2.5	950
4	10L	10R	1	18	21	30.4	27.9	-2.5	1050
5	9L	9R	1	14	23	27.9	26.0	-1.9	1150
6	8L	8R	2	14	50	26.0	22.1	-3.9	2500
7	2L	2R	3	10	111	22.1	17.9	-4.2	5550
8	2L	2R	0	10	0	17.9	0.0	-17.9	0

Conditioner:
 Type In or Select
 One
 TransferType:
 Type In or Select
 One

- Forward
- Reverse
- Combined
- Buff



Item	3L-7L:18L-18R	8L-12L:18L-18R	13L-17L:18L-18R	18L-18R:17R-13R	18L-18R:12R-8R	18L-18R:7R-3R
Description	Outside Track:Middle	Middle Track:Middle	Inside Track:Middle	Middle: Inside Track	Middle:Middle Track	Middle:Outside Track
Track Zone Ratio	3.9	1.34	1	1	1.34	3.9

