

2023東北地区連合



Oil Pattern Distance:	42 Feet	Reverse Brush Drop:	42 Feet	Oil Per Board:	50 uL
Forward Oil Total:	16.4 mL	Reverse Oil Total:	12.4 mL	Volume Oil Total:	28.8 mL
Forward Boards Crossed:	328 Boards	Reverse Boards Crossed:	248 Boards	Total Boards Crossed:	576 Boards

	Start	Stop	Loads	Speed	Crossed	Start	End	Feet	T.Oil
1	2L	2R	1	10	37	0.0	0.0	0.0	1850
2	5L	5R	1	10	31	0.0	1.4	1.4	1550
3	8L	8R	2	14	50	1.4	5.3	3.9	2500
4	8L	8R	2	18	50	5.3	10.4	5.1	2500
5	10L	10R	2	18	42	10.4	15.5	5.1	2100
6	10L	10R	2	18	42	15.5	20.6	5.1	2100
7	11L	11R	2	18	38	20.6	25.7	5.1	1900
8	11L	11R	2	18	38	25.7	30.8	5.1	1900
9	2L	2R	0	22	0	30.8	32.0	1.2	0
10	2L	2R	0	26	0	32.0	42.0	10.0	0

Navigation: Forward Reverse More

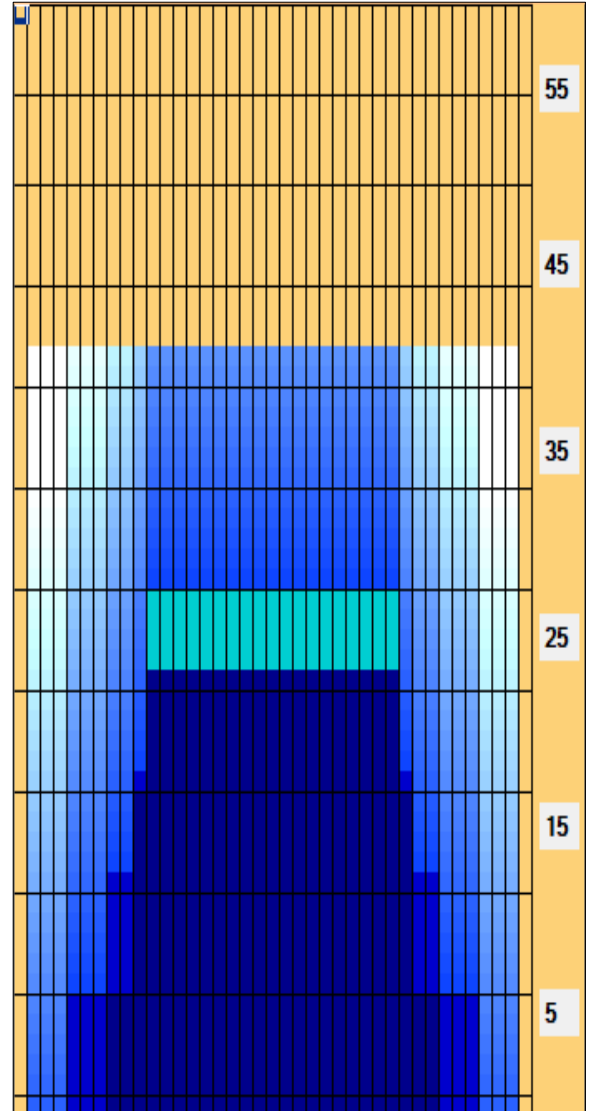
	Start	Stop	Loads	Speed	Crossed	Start	End	Feet	T.Oil
1	2L	2R	0	30	0	42.0	26.0	-16.0	0
2	11L	11R	2	18	38	26.0	20.9	-5.1	1900
3	10L	10R	2	18	42	20.9	15.8	-5.1	2100
4	8L	8R	3	14	75	15.8	9.9	-5.9	3750
5	5L	5R	3	10	93	9.9	5.7	-4.2	4650
6	2L	2R	0	10	0	5.7	0.0	-5.7	0

Navigation: Forward Reverse More

Conditioner:
Type In or Select One

TransferType:
Type In or Select One

- Forward
- Reverse
- Combined
- Buff



Item Description	3L-7L:18L-18R Outside Track:Middle	8L-12L:18L-18R Middle Track:Middle	13L-17L:18L-18R Inside Track:Middle	18L-18R:17R-13R Middle: Inside Track	18L-18R:12R-8R Middle:Middle Track	18L-18R:7R-3R Middle:Outside Track
Track Zone Ratio	7.06	1.33	1	1	1.33	7.06

